



MOSQOY

PERUVIAN TEXTILES

2019 TEXTILE COLLECTION





## REVITALIZING QUECHUA CULTURE, EMPOWERING QUECHUA WOMEN

*Mosqoy Peruvian Textiles* is a community-based textile revitalization initiative that supports Indigenous Quechua weaving cooperatives.

The textile tradition is an integral part of Quechua culture, for the Andean peoples of the Peruvian Andes. For centuries, women have perfected the process of **hand-spinning alpaca and sheep fibres**; dyeing their yarn using **100% natural plant and insect dyes** from the region; and weaving **beautiful symbols** into their textiles.

Each textile not only tells a story but empowers women through financial independence.

At Mosqoy, we believe in providing **a hand-up, not a hand-out**. That's why we uphold the autonomy of our partnering weaving cooperatives, by working with them on their own terms as equal partners. Mosqoy pays Quechua weavers wages that reflect the true labour, time, skills, and knowledge required to make their textiles.

We offer products that tell stories, connect generations of Indigenous peoples, and empower communities of women across the Cusco region.

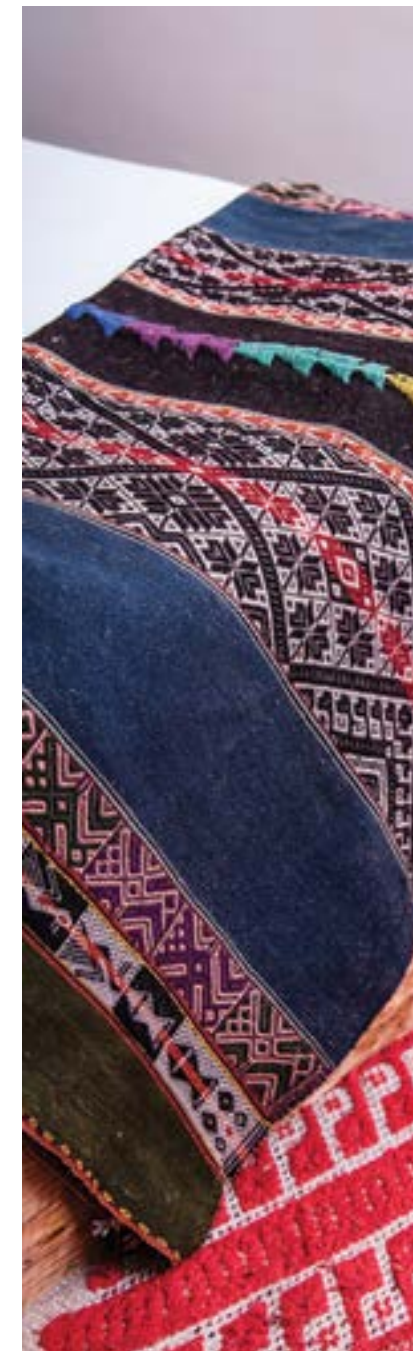
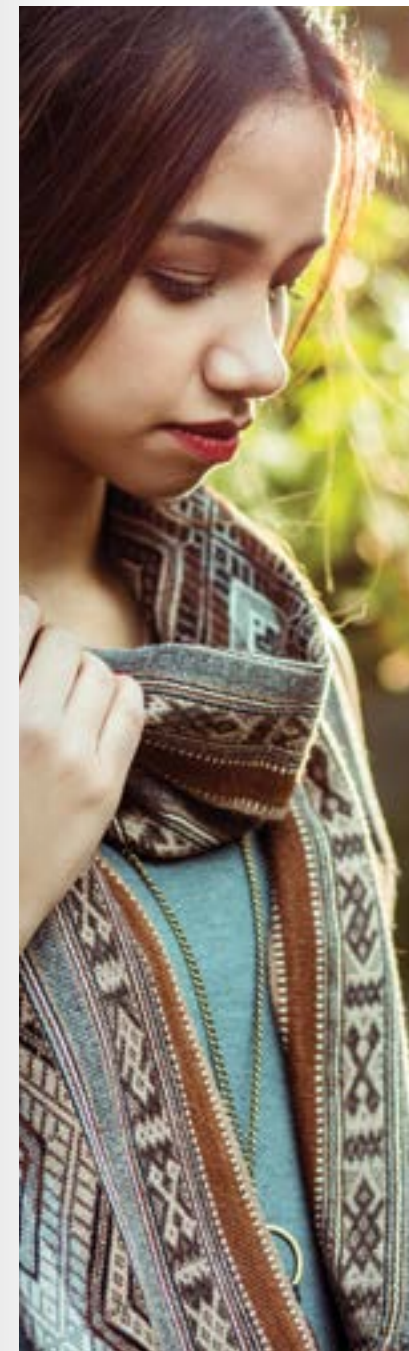


# TRADITIONAL LINE

Our traditional line is a celebration of Indigenous Quechua culture. It features products that best showcase these masterpieces, and their natural dyes and traditional symbols.

This line includes traditional pieces, passed down from generation to generation, which are often used for ceremonial or community purposes.

From start to finish, the products in this line are designed and crafted by Quechua weavers in the Andean mountains of Peru.



(Pictured: Chalina Tinsqa - Dyed Colour Scarf)





1. **Killanku Bedspread** - Alpaca fibre | 2.45 mtrs x 2.05 mtrs
2. **Liklla Blanket** - Sheep's wool | 1.00 mtrs x 1.00 mtrs

Colours and patterns may vary with each unique item



1. **Chusi Hanku Undyed Shawl or Table runner** - Alpaca fibre | 2.10 mtrs x 0.40 mtrs
2. **Chusi Tinsqa Dyed Shawl or Table runner** - Alpaca fibre | 2.10 mtrs x 0.40 mtrs

Colours and patterns may vary with each unique item





- 1. **Watana Hair Wrap** - Sheep's wool and white beads | 1.30 mtrs x 0.2 mtrs
- 2. **Punchu Poncho** - Alpaca and baby alpaca fibre | 1,60 mtrs x 1.08 mtrs
- 3. **Senq'apa Wrap Bracelet** - Sheep's wool | 0.90-1.00 mtrs x 0.04 mtrs
- 4. **Ch'uspa Crossbody Bag** - Alpaca fibre | 0.30 mtrs x 0.30 mtrs

Colours and patterns may vary with each unique item



## CHALINA TINISQA

### DYED COLOUR SCARF

Baby alpaca fibre | Colours and patterns may vary with each unique item | 1.80 mtrs x 0.25 mtrs

Pictured below



## CHALINA HANKU

### UNDYED COLOUR SCARF

Baby alpaca fibre | Colours and patterns may vary with each unique item | 1.80 mtrs x 0.25 mtrs

Pictured above



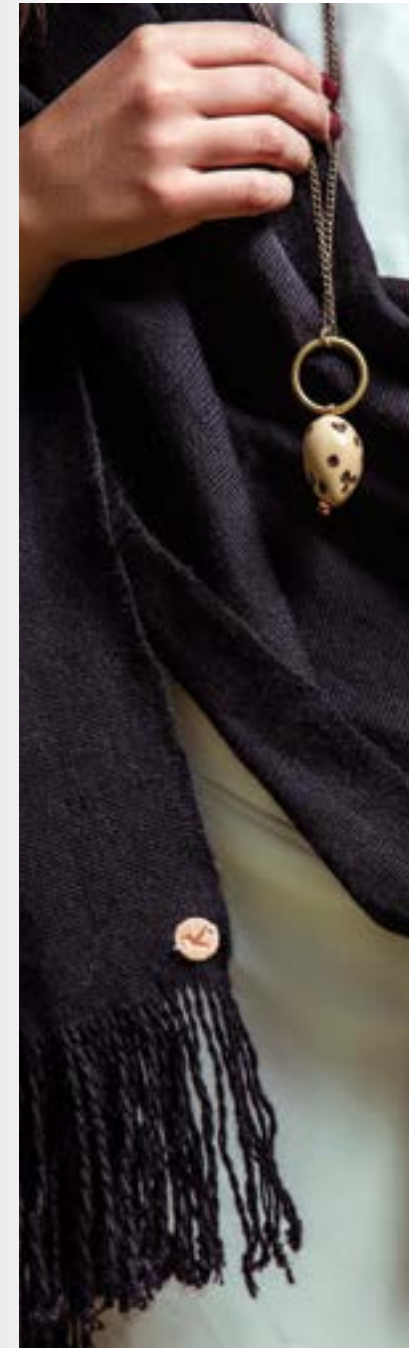
# MOSQOY LINE



(Pictured: Wayaqa - Yoga mat bag)

The Mosqoy Line is the outcome of our long-term, values-driven partnerships with Quechua communities across the Cusco region. The items are practical and innovative for modern life, while also paying homage to the Quechua textile tradition.

Mosqoy designs the pieces in this line, while our partnering artisans weave the textiles. Local seamstresses then put the finishing touches together to turn the design into a final product. To do so, many steps are involved in the process, including prototyping, capacity-building, and training. Each textile is a true collaborative and innovative journey.







## SAWNA PILLOWCASE

Sheep's wool and canvas | Patterns may vary slightly with each unique item | Available in three colour combinations:

- black and white (above)
- purple, turquoise, and white (pg 13)
- blue, red, and white (pg 14)

Available in 3 sizes:

- 0.40 mtrs X 0.40 mtrs (1)
- 0.45 mtrs X 0.30 mtrs (2)
- 0.50 mtrs X 0.50 mtrs (3)







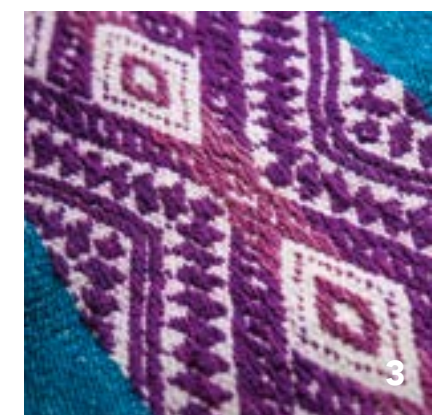
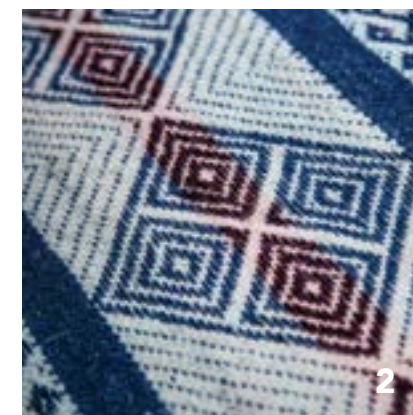
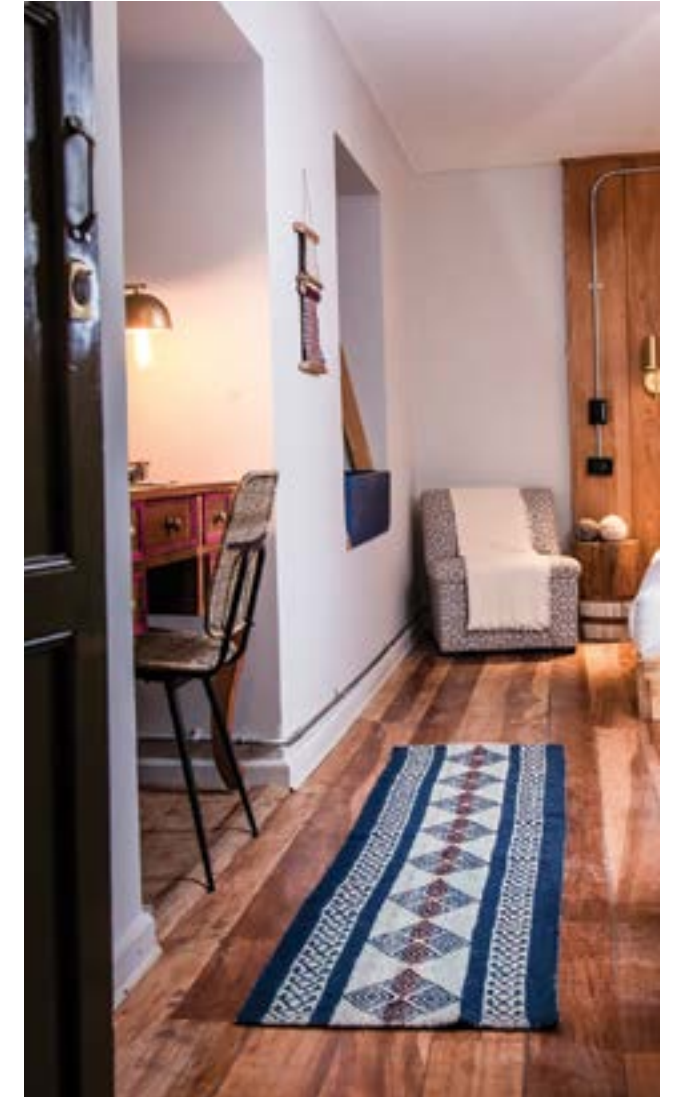
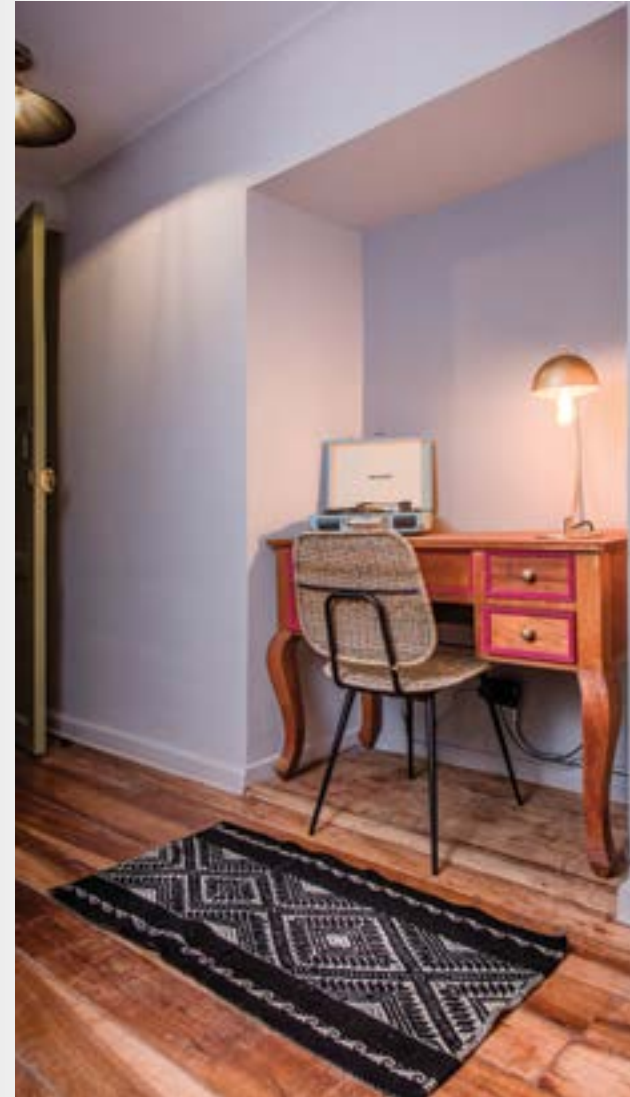
# QONPI

## RUG

Sheep's wool | Patterns may vary slightly with each unique item | 1.00 mtrs x 0.50 mtrs (left) or 2.00 mtrs x 0.50 mtrs (right) |

Available in 3 colour combinations:

- black and white (1)
- blue, red, and white (2)
- turquoise, pink, and purple (3)







# AWANA

## LOOM

Pictured above: **Large Loom** - Alpaca fibre | 1.10 mtrs x 0.55 mtrs



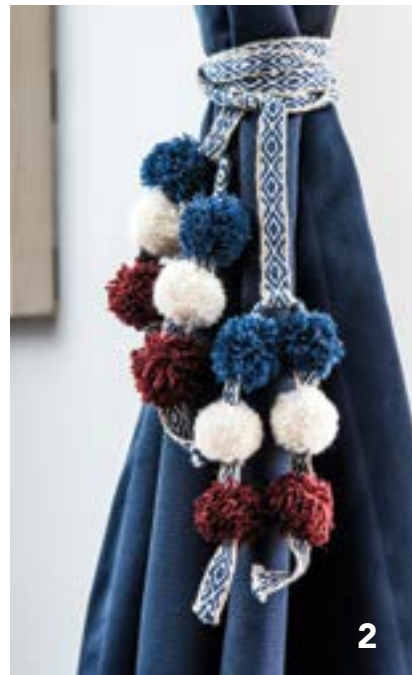
- 1. **Small Loom** - Sheep's wool | 0.25 mtrs x 0.12 mtrs
- 2. **Medium Loom** - Alpaca fibre | 0.38 mtrs x 0.20 mtrs
- 3. **Medium Loom** - Sheep's wool | 0.38 mtrs x 0.20 mtrs

All looms include a canvas bag for protection  
Colours and patterns may vary slightly for each unique item





1



2



3

**Hap'iy Curtain Tiebacks** - Sheep's wool | 1.30 mtrs x 0.20 mtrs

Available in three colour combinations:

- turquoise, pink, and white (1)
- blue, red, and white (2)
- black and white (3)



## QATA

### SHAWL

Baby alpaca fibre | Available in black, yellow, or grey | 2.00 mtrs x 0.60 mtrs





**LAMA**  
INFINITY SCARF

Baby alpaca fibre | Available in black, red, and grey |  
0.80 mtrs x 0.25 mtrs | Styled below with the Ch'ipana bracelet



**CHUNPI**

**BELT**

Sheep's wool | 0.20 mtrs x 0.10 mtrs |  
Available in three colour combinations:

- black, grey, and red
- olive green and pink
- navy, white, and yellow



**SURI**

**WRIST WARMERS**

Baby alpaca fibre | Available in grey, dark grey,  
or brown







(Pictured: Wachala - Small shoulder bag)

## WAYAQA

### YOGA MAT BAG

Sheep's wool | Patterns vary slightly with each unique item | Only available in black and white | 0.70 mtrs x 0.16 mtrs



## QAMANA

### TOTE BAG

Sheep's wool | Colours and patterns may vary slightly for each unique item | 0.35 mtrs x 0.35 mtrs





1



2



3



4

1. **Ch'ipana Wrap Bracelet** - Sheep's wool and silver charms sourced from a local artisan | Colours and patterns may vary slightly with each unique item | 0.90-1.00 mtrs x 0.04 mtrs  
 2. **Tusay Eyeglass Holder** - Sheep's wool and small white beads | Available in purple (2), coral (3), or dark blue (4) | 0.90-1.00 mtrs x 0.04 mtrs



## WARKUY

### CAMERA STRAP

Sheep's wool | 1.02 mtrs x 0.05 mtrs | Available in four colour combinations:

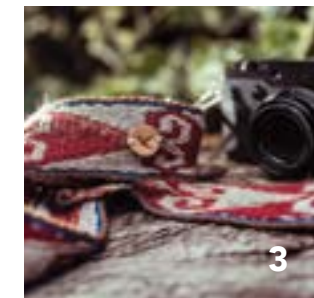
- red, white, and blue (1)
- black and white (2)
- red and white (3)
- blue, white, and green (4)



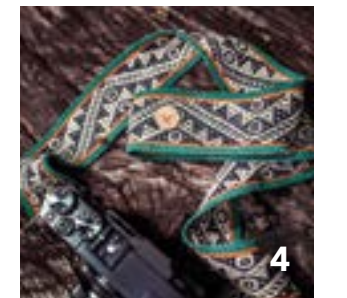
1



2



3



4





1



2



3



4

**Estalla Pouch** - Sheep's wool and canvas | Patterns may vary with each unique item | Available in two sizes: 0.20 mtrs x 0.16 mtrs or 0.25 mtrs x 0.20 mtrs

Available in four different colour combinations:

- purple, blue, and red (1)
- light blue, pink, and navy (2)
- purple, navy, and burgundy (3)
- light blue, pink, and white (4)



**Qolqe Change Purse** - Sheep's wool and canvas | Patterns may vary slightly with each unique item

Available in pink or red | 0.14 mtrs x 0.09 mtrs





1



2



3

**Qhelqay Pencil Case** - Sheep's wool | Patterns may vary slightly for each unique item | 0.20 mtrs x 0.07 mtrs | Available in three different colour combinations:

- navy, pink, and white (1)
- light blue, red, and purple (2)
- purple, red, and turquoise (3)



1



2

1. **Yanapay Laptop Case** - Sheep's wool | Patterns may vary slightly for each unique item | 0.34 mtrs x 0.25 mtrs  
 2. **Amachay Tablet Case** - Sheep's wool | Patterns may vary slightly for each unique item | 0.25 mtrs x 0.18 mtrs





# MILLMA

Mosqoy's Organic Alpaca Yarn

Millma, our Mosqoy Fibres Line, is one-of-a-kind. It features organic alpaca and baby-alpaca yarn that is hand-sheared and hand-spun by women in the high-altitude Andean community of Cancha Cancha.

All of our yarn is undyed, featuring 5 different natural alpaca colour selections.

We offer one-ply and two-ply yarn of varying thicknesses (from 250 yards/lbs to 1300 yards/lbs), for all weavers' and knitters' needs. Our two-ply yarn comes in both one-colour and two-colour combinations. All of our balls of yarn are 240-250 grams.

Please inquire for more information about our Millma colour and weight options.



Pictured:

1. Maplewood, single-ply, alpaca fibre, 600 yards/lbs
2. Charcoal, single-ply, alpaca fibre, 250 yards/lbs
3. A selection of some of our single-ply yarns
4. Black & White, double-ply, baby alpaca fibre, 350 yards/lbs



# OUR MOTTO

## GLOBAL SUSTAINABILITY THROUGH LOCAL RESILIENCE

Fair-trade principles are behind every item we make. When you buy a scarf, bracelet, or pillowcase from *Mosqoy*, you are directly contributing to the sustainable development of Indigenous Quechua communities.

*Mosqoy Peruvian Textiles* is built on a community-based profit model and centered around the voiced needs of our partnering communities. The profit from each textile supports socioeconomic development projects and post-secondary educational scholarships.



## OUR WEAVERS

Our logo - the “q’ente” or hummingbird - symbolizes rebirth for new life. It’s also linked to reciprocity, love, and nurturing. Our ties to the Cusco region run deep; with each of our partnering communities, we exchange stories, support, and knowledge.

We work with over 70 weavers in some of the most remote communities of the Sacred Valley and Mapacho River Valley, supporting artisanal cooperatives in Amaru, Cancha Cancha, Huaran, Pitukiska, and Parobamba.

In collaboration with *Mosqoy*, each of these cooperatives are actively working to revitalize the Quechua textile tradition, passing down their knowledge to the next generation. We nurture both the art and business of the textile, so that women can prioritize an autonomous and sustainable future for their children.



**100% of textile profits return to Quechua communities and a charitable youth scholarship program**





## ACKNOWLEDGMENTS

We respectfully acknowledge the communities and culture of the Quechua peoples, on whose land we are privileged to work, in the Peruvian Andes. The products featured in this catalogue are handmade by weavers in Cancha Cancha, Parobamba, Pitukiska, Huaran, and Amaru.

This collection and catalogue were made possible through the collaborative efforts of the following passionate individuals, as part of the Mosqoy team:

Lead Designer for the 2019 Textile Collection | **Cusi Saco Chung**

Catalogue Designers | **Kate Korte** and **Anastasiya Smolina**  
Design and Collection Assistant | **Beth Luque Huanca Delaplain**  
Design and Collection Mentor | **Ashli Akins**  
Community Facilitators | **Anshela Paravecino Kehuarucho**, **Silvia Huanaco Surco**,  
and **Mishjaky Paravecino Kehuarucho**  
Spanish-English Translator | **Alicia Cristina Gallardo**

Model | **Nataly Zuñiga**  
Product & Model Photographer | **Gustavo Vivanco**  
Hair & Make-up | **Meltem Nural**  
Jewellery | **Bonafide by Design**  
Clothing | **Hilo**  
Photo Shoot Locations | **Casita Huarán** and **Selina**

Photo on page 2 | **Alison Root**  
Photos on pages 31 (photos 1, 2, 3), 32, 33, 34, 36 | **Ashli Akins**  
Drawing on page 33 | **Lydia Beauregard**  
Logos | **Anastasiya Smolina**





# MOSQOY

PERUVIAN TEXTILES



@Mosqoy @mosqoyperu

[www.mosqoy.org](http://www.mosqoy.org)  
[textiles@mosqoy.org](mailto:textiles@mosqoy.org)

Find us on Etsy  
**MosqoyTextiles**

**Canada:**  
1004 North Park  
Victoria, BC, Canada  
V8T 1C6

**Peru:**  
Ayni Center  
Jr. Jose Maria Arguedas, J-13,  
Urbanización Santa Mónica,  
Cusco, Perú